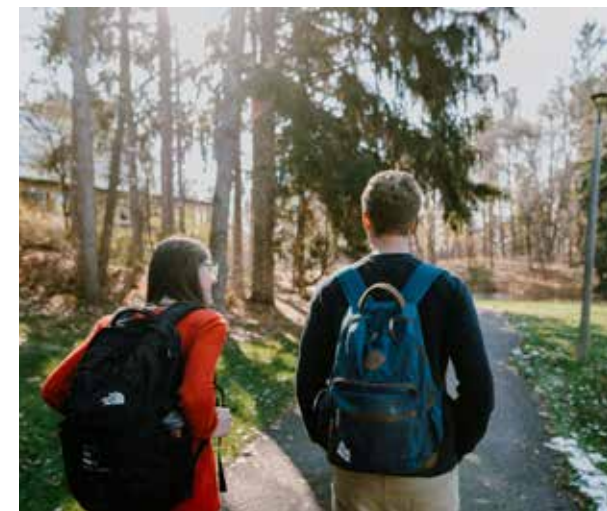




CALVIN  
THEOLOGICAL  
SEMINARY

## PAST RENOVATION TIMELINE

- 1959 | The core seminary facilities were built, including classrooms, the chapel, and the auditorium
- 1975 | Faculty offices, a computer room, and several open study spaces were added
- 1991 | Additional faculty offices were built to handle growth
- 2002 | A secondary entrance was added, along with the Covenant Room and the Presidential Suite
- 2004 | The Student Center was created



## OVERVIEW OF THE CAMPAIGN

For over 140 years, Calvin Seminary has trained, equipped, and prepared men and women from all around the globe to serve the Church. While this mission has remained consistent, the way students are best supported and formed continues to change. To address these shifts in student needs and to provide a flexible and innovative learning environment for future church leaders, Calvin Seminary is refreshing and renewing its current facilities.

Our new campaign, “**Rooted in Christ: Renewing for the Future,**” aims to improve what was built over 60 years ago. This project will allow for more collaboration among students and faculty, adaptable teaching spaces, and a hospitable environment for all who step onto the campus.





PROJECT GOAL: \$6.9 MILLION   TIMELINE: 2020-2021   LAST RENOVATION: 2004

Picture yourself walking into a familiar space. It's comfortable, welcoming, and you know just where to go and what's around every turn. At Calvin Seminary, we desire to bring that familiarity into every corner of our facilities.

**As the learning needs of students change, our facilities need to change as well.** We envision creating collaborative spaces for students to connect between classes, an outdoor space that provides a change in setting for a study group, the flexibility to transform a small lecture group into a distance learning classroom in a few easy steps, and overall upgrades to our furnishings and technology.

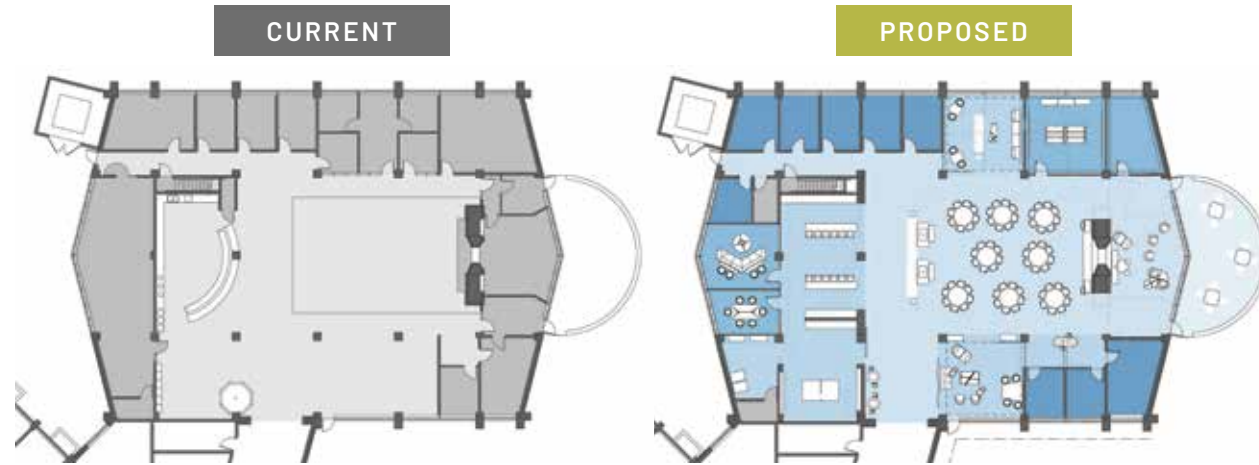
*Through a community  
of support at Calvin  
Theological Seminary,  
students will continue  
to be built up in Christ  
Jesus, preparing to live  
their lives in Him.*



## STUDENT CENTER



The **Student Center** is the community hub of seminary life. Students meet in this central, open space to study, enjoy a meal, or simply find a comfortable space to unwind between classes. The redesign of the layout of this area will increase collaboration, maximize flexibility, and facilitate a better connection to the outdoors. By updating the finishes, furnishings, and lighting, large and small groups alike will be able to enjoy this adaptable space.



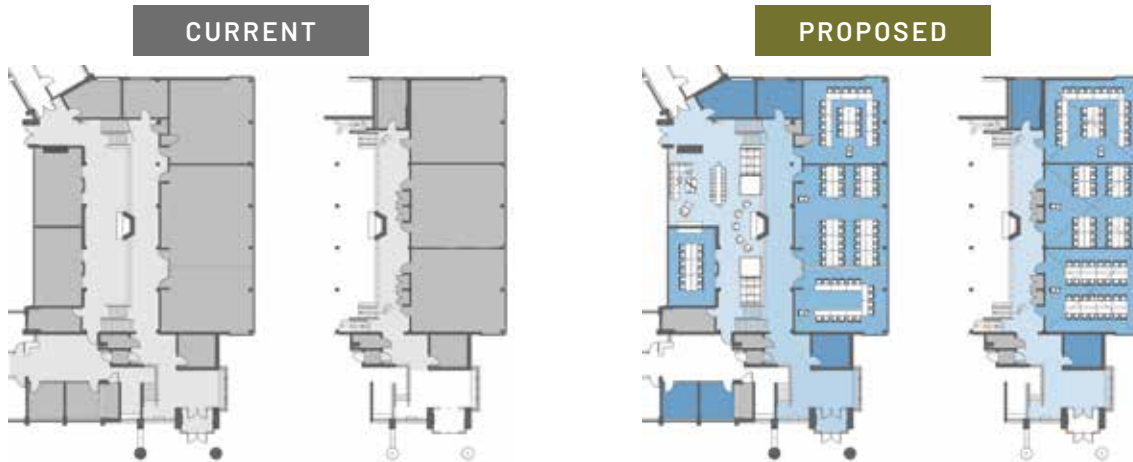
YEAR BUILT  
**2004**





## CLASSROOMS AND COLLABORATIVE SPACES

The **Classrooms** have served the seminary community well for over sixty years, but over time, the fixed layout and furniture have limited teaching and learning activities. Current teaching styles emphasize collaboration, encourage more participation, and have increasingly incorporated technology use in the classroom. Adding furniture and fixtures that are easy to reconfigure and upgrading technology to serve both resident and distance students will enhance and facilitate learning. Further, creating social and **Collaborative Spaces** to allow for conversations between classes will provide students comfortable and flexible areas to continue learning alongside one another.



YEAR BUILT  
**1959**

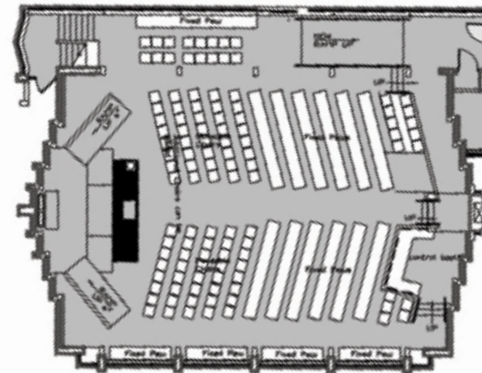




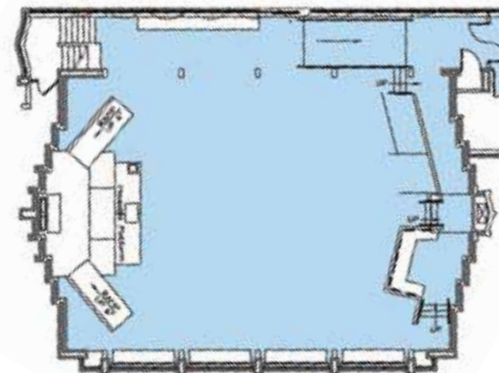
## CHAPEL

The **Chapel** - the heartbeat of the seminary - is a space where students, faculty, staff, and guests gather to worship both individually and in community with one another. A comfortable, flexible, and welcoming environment will be created by updating the furnishings and upgrading the technology. Additionally, access to the prayer rooms located beneath the chapel will be improved, providing students space for quiet reflection on campus.

CURRENT



PROPOSED



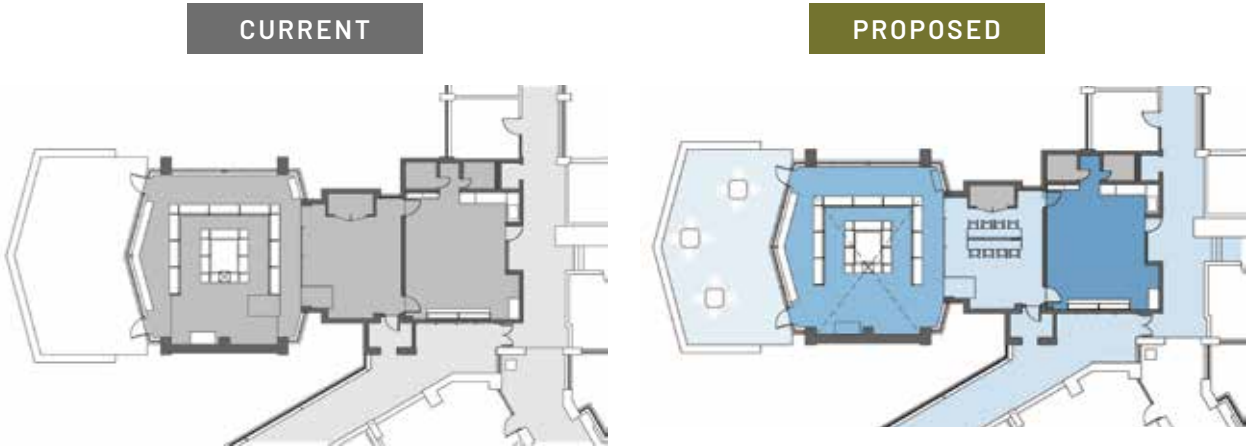
YEAR BUILT  
**1959**



COVENANT ROOM



Added to the seminary facilities in 2002, the **Covenant Room** is used as a classroom or a meeting room by students, faculty, and board members. Upgrading the technology in this space will allow for a variety of course delivery approaches, including hybrid, synchronous, or face-to-face, as well as support video and web conferencing. Further, adding furniture that is flexible and adaptable allows this space to seamlessly transition from a classroom into an adaptable meeting room.





## WELCOME CENTER



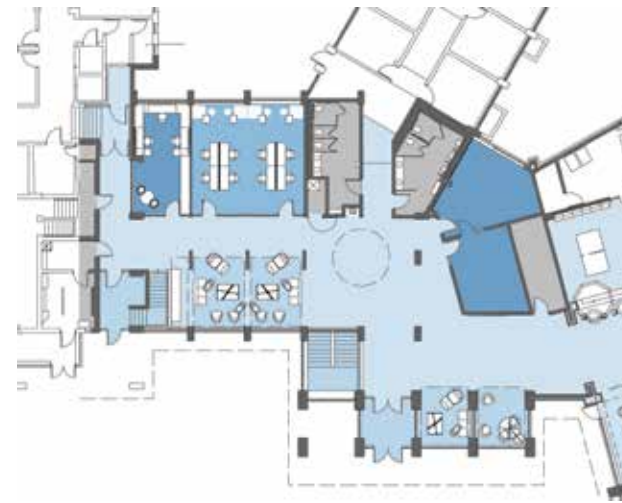
First impressions are important. When the **Welcome Center** entrance was added in 1975, it was created to mark a common and welcoming entry point. As the building has evolved over the years and more entrances have been added, there is once again a need to provide a clear and welcoming entrance to Calvin Seminary. By elevating the roof and adding more windows, students and guests will know exactly where to enter. Additionally, providing options for collaboration near this entrance will increase connectivity among students, staff, faculty, and visitors.



CURRENT



PROPOSED



YEAR BUILT  
**1975**





## OUTDOOR SPACE

Being in God's creation allows for inspiration, renewal, and a connection to nature. Adding collaborative spaces outdoors gives students additional study spaces and provides the Calvin Seminary community with a place to recharge with fresh air. Offering different environments for students improves culture and supports multiple learning styles.



## OTHER KEY IMPROVEMENTS

The common spaces within the seminary facilities are in need of improvements, including new carpet, paint, lighting, and signage. By revisiting these areas with a fresh design, students and guests will enter the facilities feeling welcomed. New windows, updated bathrooms, and comfortable furniture pieces will all aid in this improvement.





## EXISTING PLAN + CHALLENGES

## OVERALL RENEWAL PLAN

### STUDENT CENTER

- maximize flexibility / social / collaboration
- enhance food service / dining component
- study adjacencies and maximize synergies
- update finishes / furnishings / lighting
- better connection to outdoors

### CLASSROOMS

- improve flexibility for teaching and collaboration styles (floor / furnishings)
- improve comfort levels (mech/elect)
- review technology upgrades
- additional access to power outlets

### CHAPEL

- maximize flexibility / comfort (furnishings)
- review technology upgrades
- review access to lower level prayer rooms

### ENTRY A / COMPUTER LAB

- provide a quiet, individual work environment
- mix of fixed desktops + space for laptops
- improve comfort levels (mech/screens)

### COVENANT ROOM

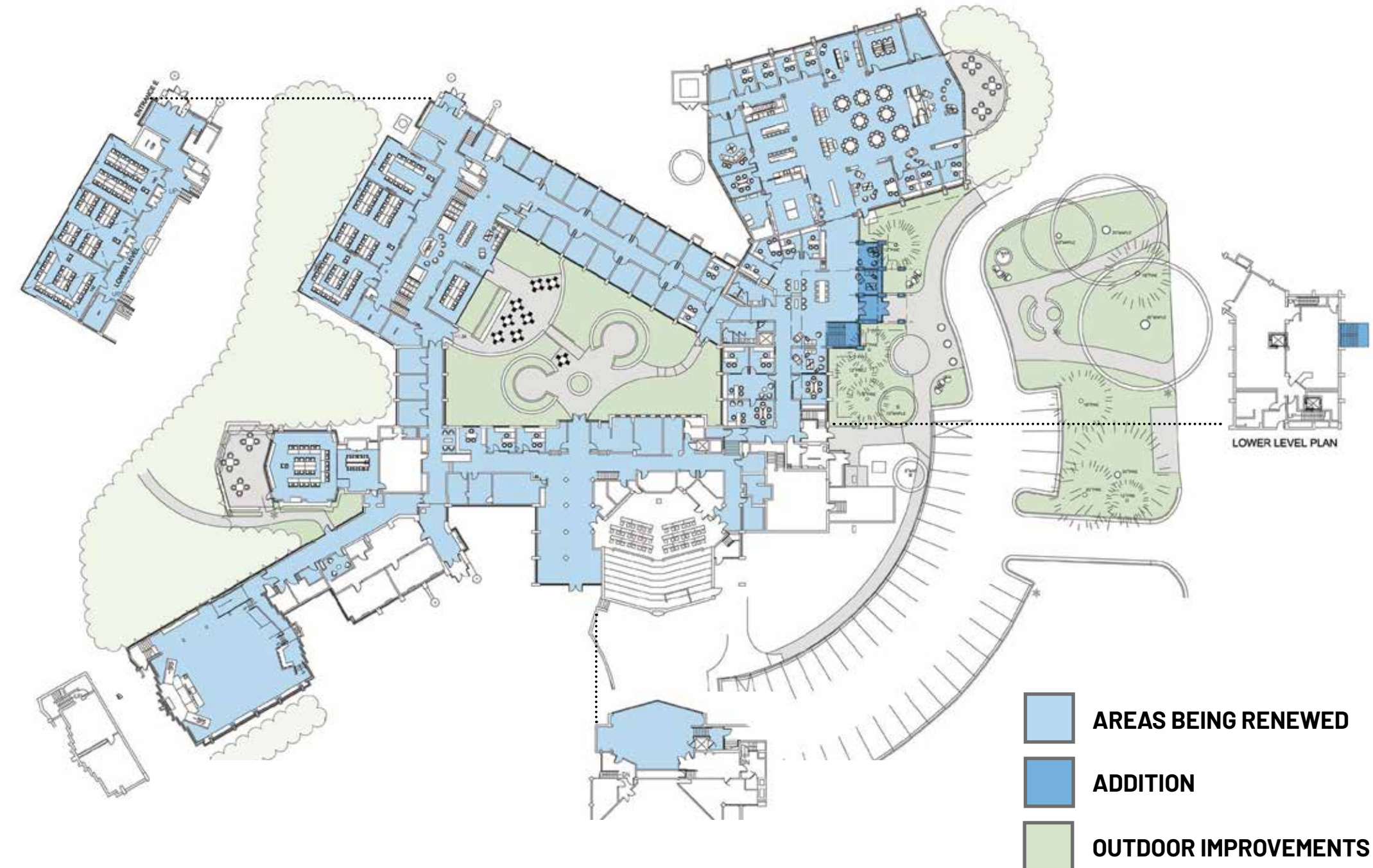
- improve flexibility for multipurpose use (floor / furnishings)
- review technology upgrades
- improve use/functionality of adjacent spaces (including community room and patio)

### CIRCULATION / WAYFINDING / SUPPORT

- create spaces which support social interaction and are intentionally designed / placed
- improve wayfinding and signage
- improve connectivity to outdoors / patio
- access to charging stations
- improve lighting
- enhancement of "main entry"
- identify appropriate areas for messaging

### OUTDOOR SPACE

- improve visual and physical connectivity from outdoor spaces to indoor spaces
- create "spaces" via shade/structure/furnishings
- manage the relationship of outdoor uses adjacent to indoor areas of focus







## WILL YOU JOIN US?

Your partnership will help sink our roots deeper into the investment of our students as we together seek to expand God's Kingdom here on earth.

Join us as we innovate for the future of theological education at Calvin Seminary.

Contact Bob Knorr for more information.  
616-406-7102 or [rknoor@calvinseminary.edu](mailto:rknoor@calvinseminary.edu)



**CALVIN**  
THEOLOGICAL  
SEMINARY

3233 BURTON ST SE  
GRAND RAPIDS, MI 49506  
[www.calvinseminary.edu](http://www.calvinseminary.edu)